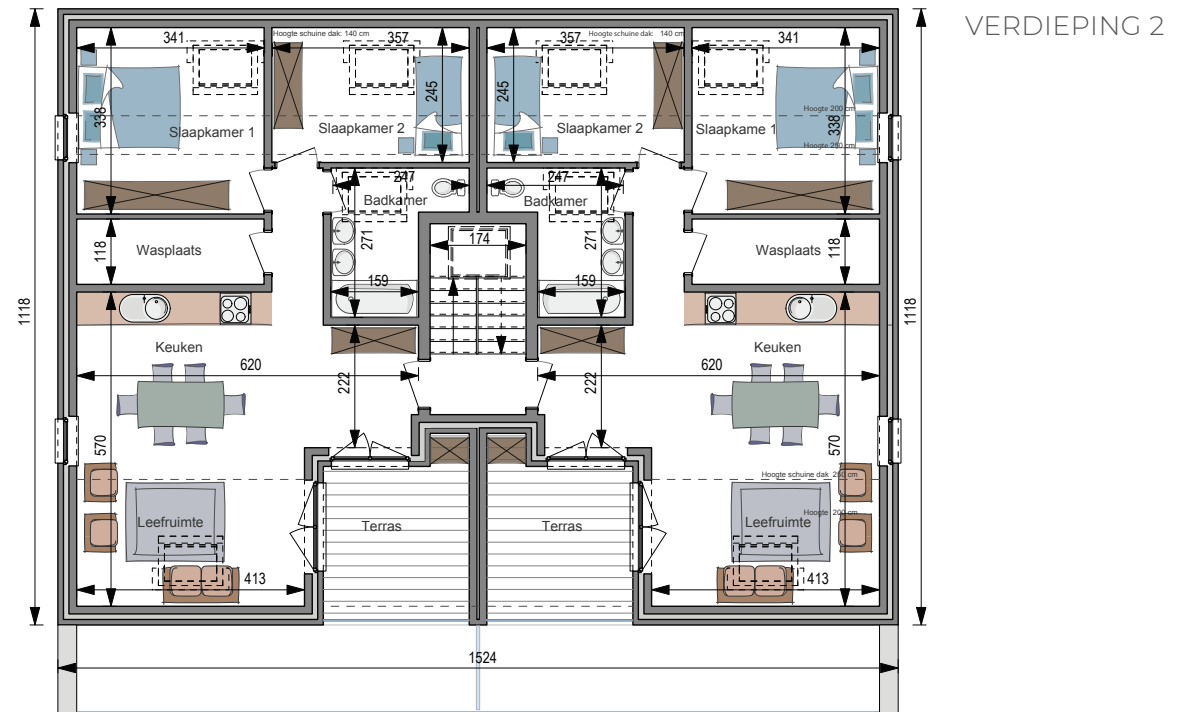
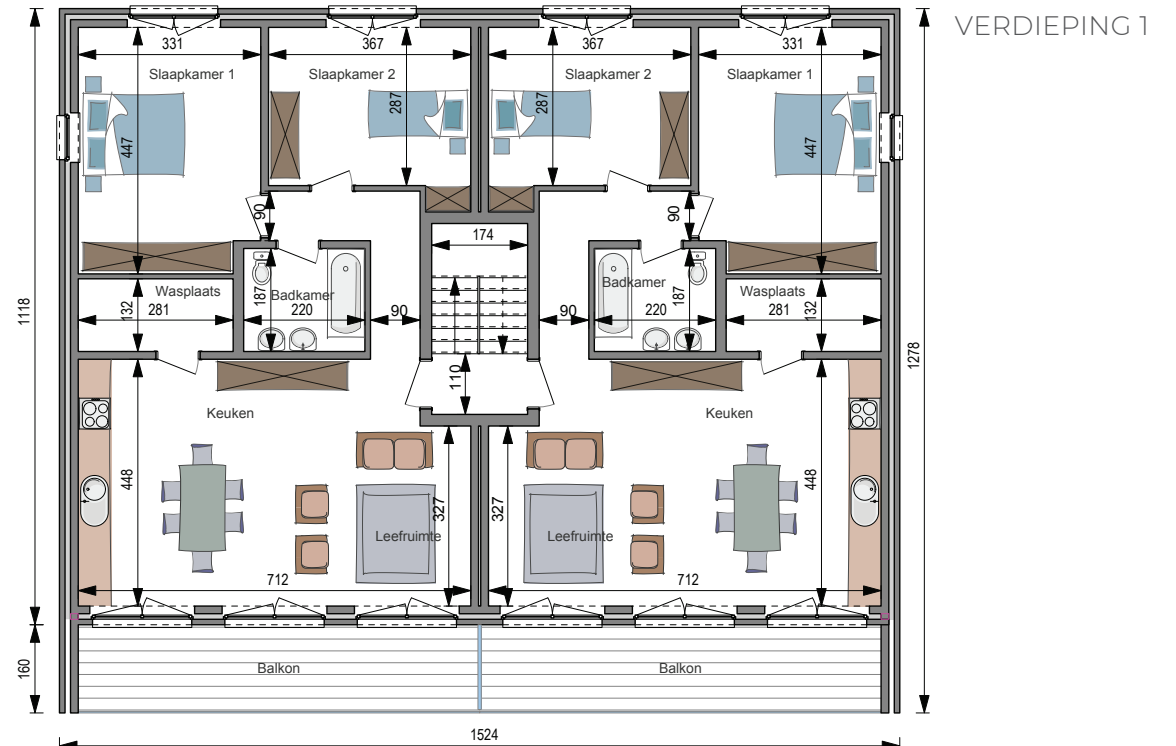
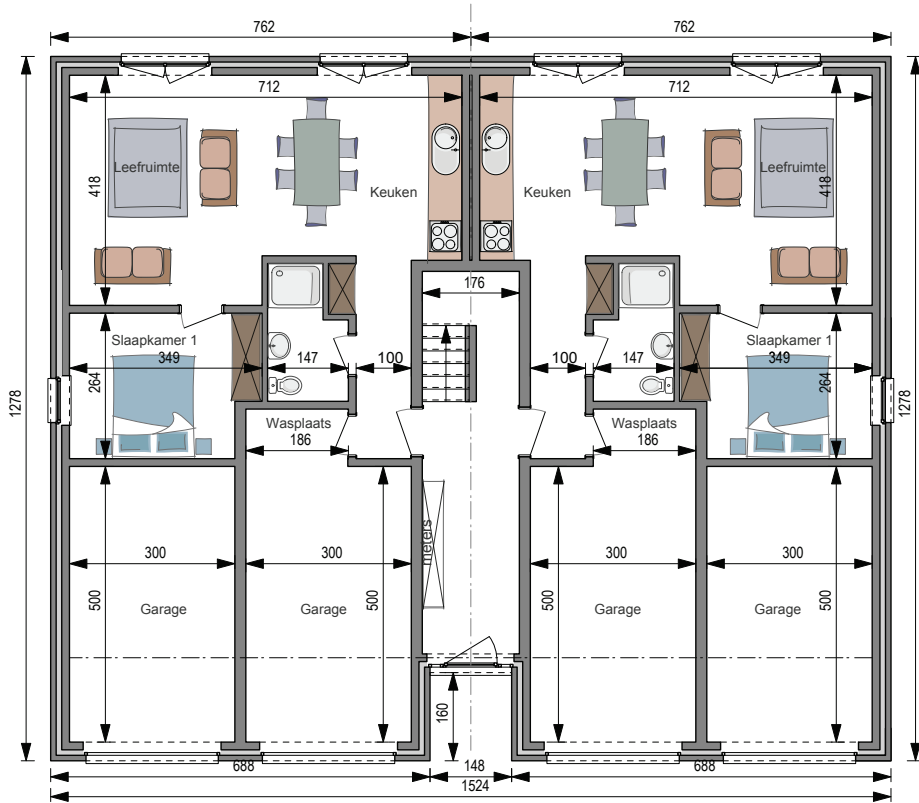


GELIJKVLOERS







### GEBOUW 6 APPARTEMENTEN

SLEUTEL-OP-DE-DEUR **576.654 €\***

WINDDICHTER RUWBOUW **358.433 €\***

Totale oppervlakte **557 m<sup>2</sup>**

Oppervlakte 1 appart. **43 - 71 - 62 m<sup>2</sup>**

Prijs per m<sup>2</sup> **1.035 €\***

7 m onder de kroonlijst ■ Dakhelling: 35°

\*Prijzen exclusief BTW  
en ereloon architect (±5%)

# WC 555